

SMX-HT Square Cased Centrifugal Box Fans

High Temperature

For Industrial Kitchens

Continuous running in temperatures
up to 180°C

0.10 m³/sec to 3.40 m³/sec



*ventilation
systems*





SMX-HT - Square Cased Centrifugal Box Fans

High Temperature Features and Benefits

- Motor out of airstream
- Single or Three Phase, IP55, Class F
- Backward curved centrifugal impeller
- Continuous operation temperature up to 180°C



High temperature box fans

Motor out of airstream for improved longevity.

Bifurcated casework keeps motor out of extract airflow avoiding over heating and direct contact with dirt and grease from cooker therefore less maintenance and cleaning.

9 sizes with airflow from 0.25 m³/hr to 3.36 m³/hr

Static pressure to 700 Pa

For ducted or direct installation

Backward curved impellers

Particularly suited for installation into commercial and industrial kitchens for extracting clean or dusty air.

Construction

Aluminium frame with double skin sound absorbing insulated panels removable from the impeller side.

External motor, B5 execution directly coupled to impeller

Acoustic lining to reduce noise breakout

Sound absorbing and self-extinguishing acoustic insulation between the steel sheet layers of the panels

Motor

Asynchronous squirrel cage three or single-phase motors

Comply with:

- IEC 60034
- IEC 60072
- EMC 2004/108/CE
- LVD 2006/95/CE
- CE marked.

IP55, Class F. Suitable to S1 service (continuous running with constant load).

Installation

Easy installation SMX-HT can be fitted horizontally or vertically.

Punched mounting feet for easy handling and fixing.

Suitable for outdoor installation using a water-proof protection cover (available on request).

Accessories

Water-proof protection cover

Anti-vibration supports

Floor support feet

Lower Panel with Drain

Grease Collection Tray

Square to round outlet cone

Round spigot inlet cone

High temperature flexible connectors

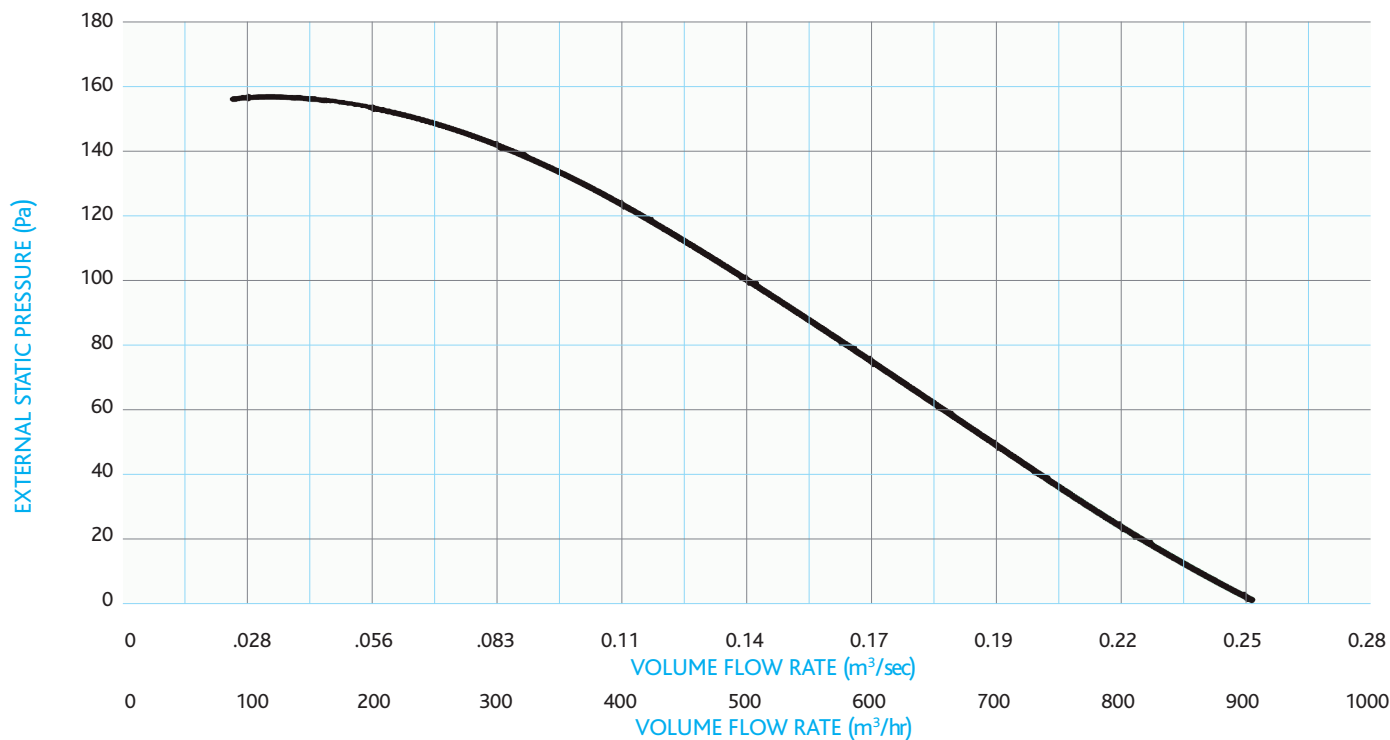
Service switch IP67 Speed controllers

SMX-HT - Square Cased Centrifugal Box Fans High Temperature



TECHNICAL DATA - SMX254MHT and SMX254THT

FAN SPEED



ELECTRICAL DATA	MODEL	PHASE	POLES	POWER (kW)	IN AMPS	IP/CL	MOT (GR)
	SMX254MHT	M	4	0.09	1.00	55/F	56
	SMX254THT	T	4	0.09	0.60	55/F	56

SMX254MHT SMX254THT	Mid Octave Frequency band / Hz									Total in Duct Sound Power Level
		63	125	250	500	1k	2k	4k	8k	
	Lw	37	52	49	50	45	48	43	29	57
	Lp	16	31	29	30	29	27	23	9	40

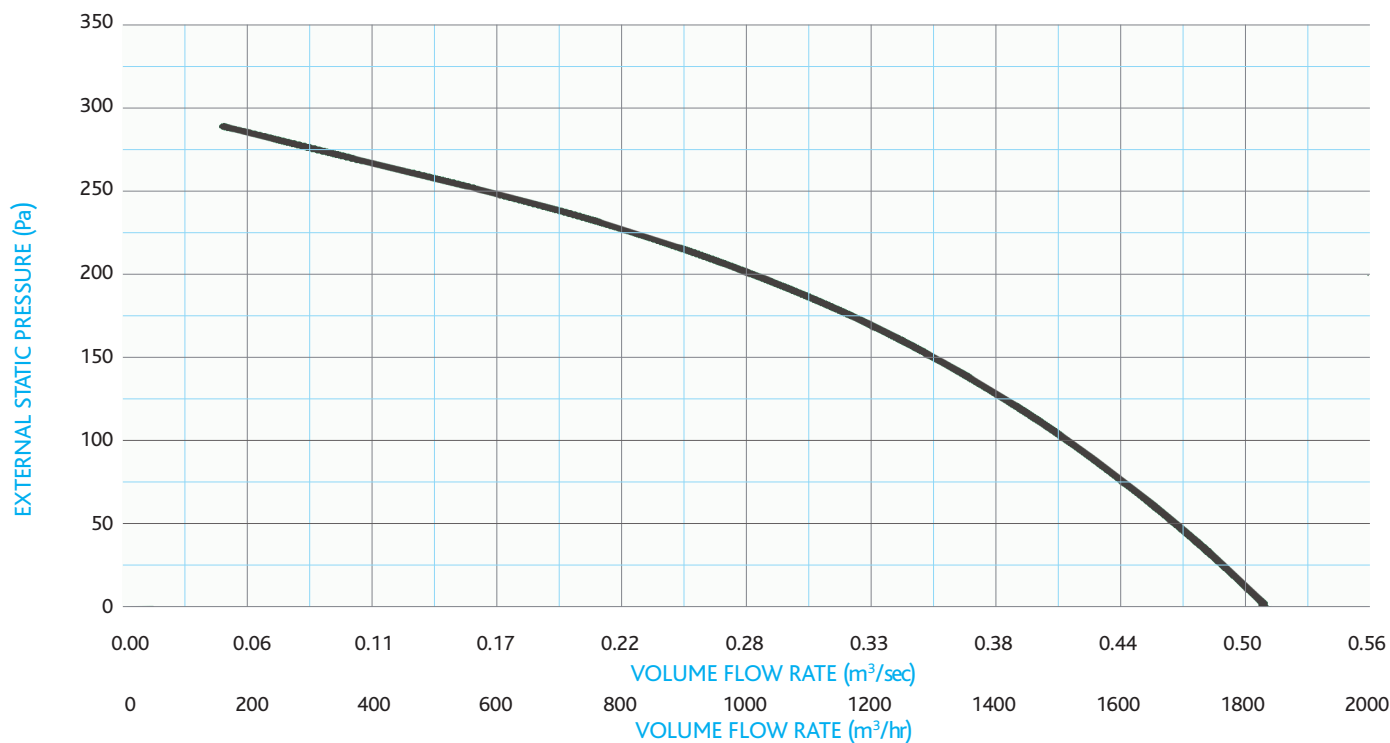
Frequency 50Hz: Air temperature 15°C: Barometric pressure 760 mm Hg: Air specific weight 1.22 Kg/m³: Lp: sound pressure level measured at 3m.

SMX-HT - Square Cased Centrifugal Box Fans High Temperature



TECHNICAL DATA - SMX314MHT and SMX314THT

FAN SPEED



ELECTRICAL DATA	MODEL	PHASE	POLES	POWER (kW)	IN AMPS	IP/CL	MOT (GR)
	SMX314MHT	M	4	0.12	1.30	55/F	63
	SMX314THT	T	4	0.12	0.70	55/F	63

SMX314MHT SMX314THT	Mid Octave Frequency band / Hz									Total in Duct Sound Power Level
		63	125	250	500	1k	2k	4k	8k	
	Lw	37	47	56	62	62	57	52	41	66
	Lp	16	28	37	41	42	37	31	21	46

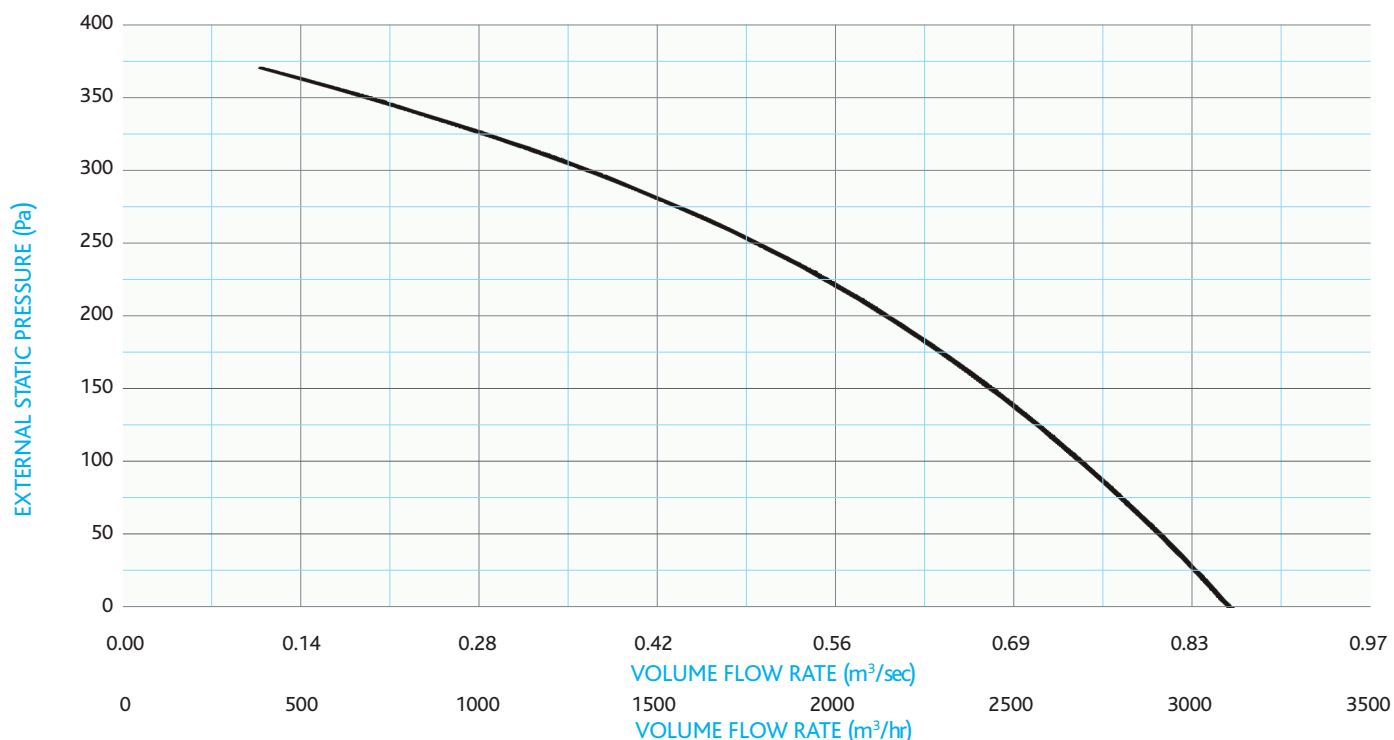
Frequency 50Hz: Air temperature 15°C: Barometric pressure 760 mm Hg: Air specific weight 1.22 Kg/m³: Lp: sound pressure level measured at 3m.

SMX-HT - Square Cased Centrifugal Box Fans High Temperature



TECHNICAL DATA - SMX354MHT and SMX354THT

FAN SPEED



ELECTRICAL DATA	MODEL	PHASE	POLES	POWER (kW)	IN AMPS	IP/CL	MOT (GR)
	SMX354MHT	M	4	0.25	2.20	55/F	71
	SMX354THT	T	4	0.25	0.80	55/F	71

SMX354MHT SMX354THT	Mid Octave Frequency band / Hz									Total in Duct Sound Power Level
		63	125	250	500	1k	2k	4k	8k	dB(A)
	Lw	40	54	60	65	65	62	57	46	70
	Lp	20	33	40	44	44	41	36	25	49

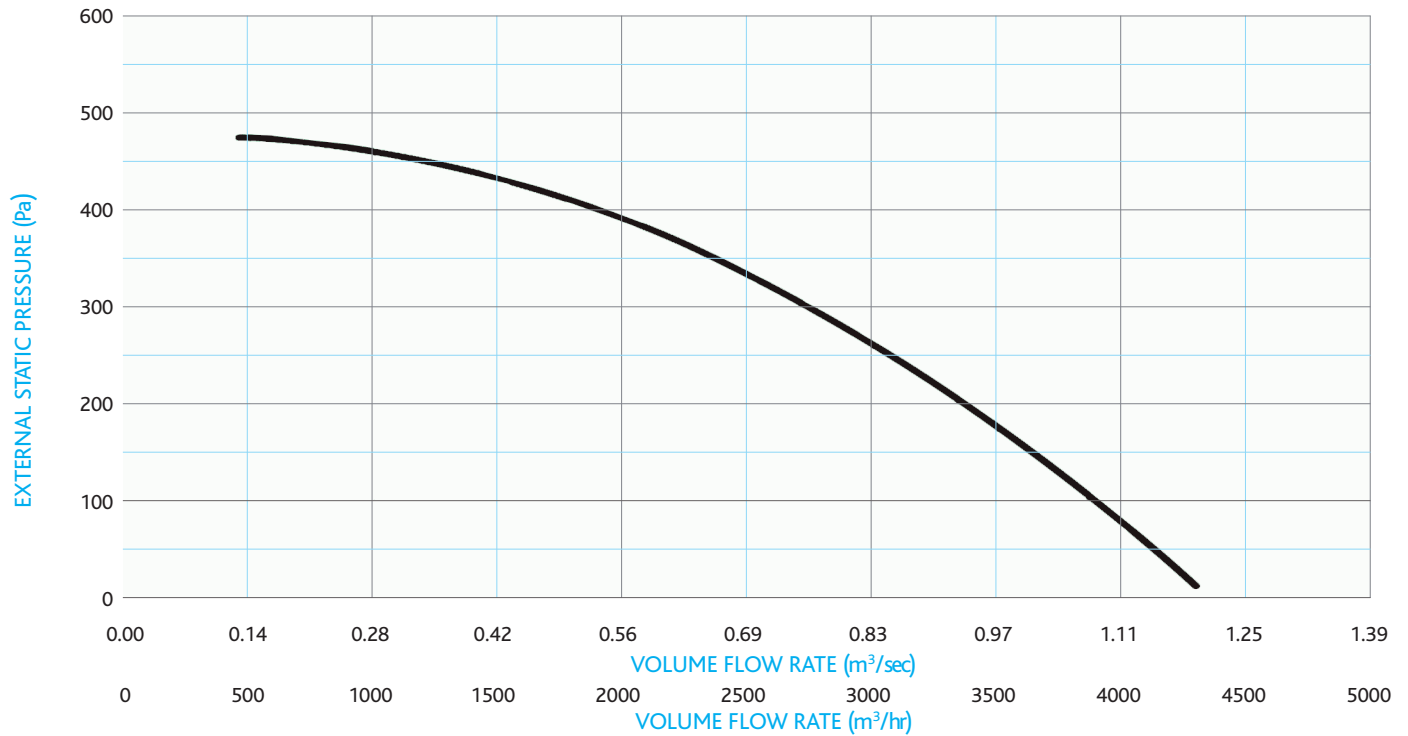
Frequency 50Hz: Air temperature 15°C: Barometric pressure 760 mm Hg: Air specific weight 1.22 Kg/m³: Lp: sound pressure level measured at 3m.

SMX-HT - Square Cased Centrifugal Box Fans High Temperature



TECHNICAL DATA - SMX404MHT and SMX404THT

FAN SPEED



ELECTRICAL DATA	MODEL	PHASE	POLES	POWER (kW)	IN AMPS	IP/CL	MOT (GR)
	SMX404MHT	M	4	0.55	4.30	55/F	80
	SMX404THT	T	4	0.55	1.60	55/F	80

SMX404MHT SMX404THT	Mid Octave Frequency band / Hz									Total in Duct Sound Power Level
		63	125	250	500	1k	2k	4k	8k	dB(A)
	Lw	43	57	64	66	67	64	61	49	72
	Lp	22	36	43	46	46	44	40	29	51

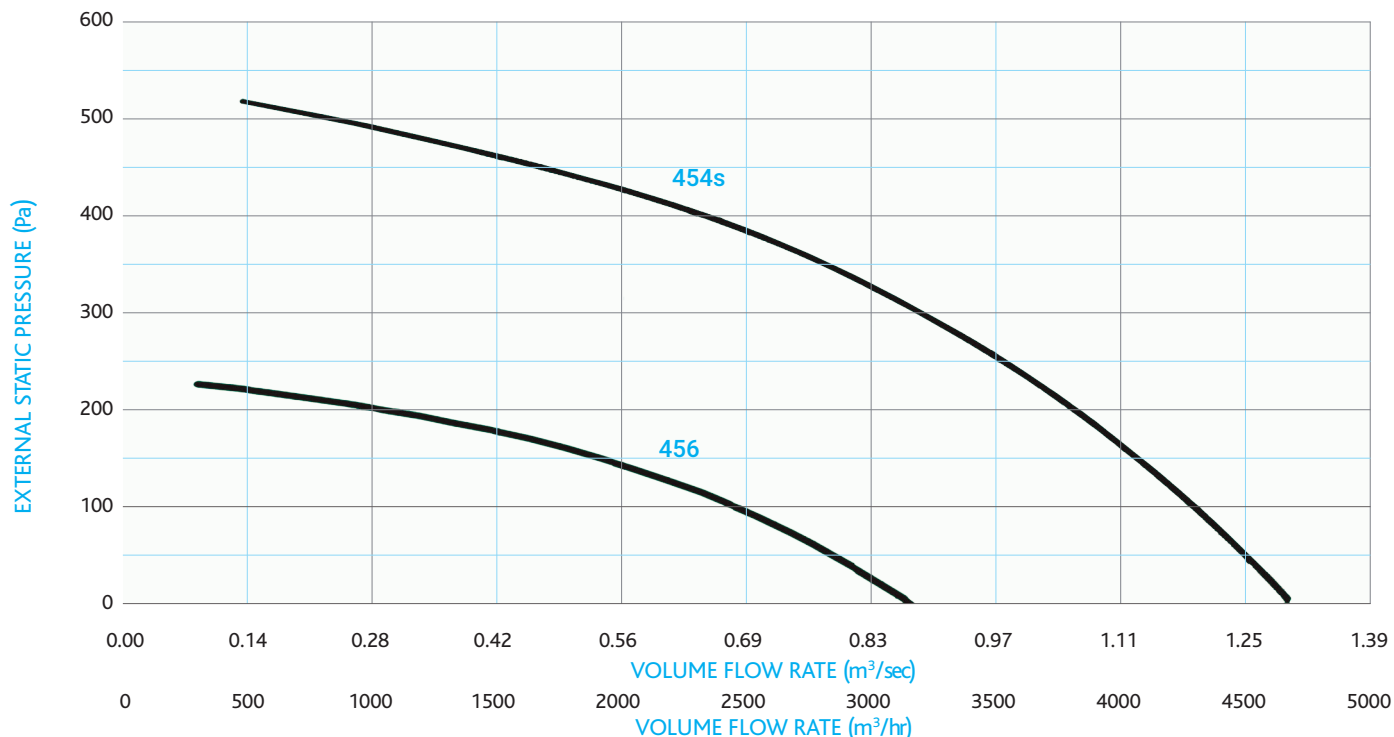
Frequency 50Hz: Air temperature 15°C: Barometric pressure 760 mm Hg: Air specific weight 1.22 Kg/m³: Lp: sound pressure level measured at 3m.

SMX-HT - Square Cased Centrifugal Box Fans High Temperature



TECHNICAL DATA - SMX454MHT, SMX454THT and SMX456THT

FAN SPEED



ELECTRICAL DATA	MODEL	PHASE	POLES	POWER (kW)	IN AMPS	IP/CL	MOT (GR)
	SMX454MHT	M	4	0.75	5.5	55/F	80
	SMX454THT	T	4	0.75	2.20	55/F	80
	SMX456THT	T	6	0.37	1.20	55/F	80

	Mid Octave Frequency band / Hz									Total In Duct Sound Power Level dB(A)
		63	125	250	500	1k	2k	4k	8k	
SMX454MHT and SMX454THT	Lw	46	60	67	70	70	67	63	52	75
	Lp	26	39	47	50	50	50	42	55	55
SMX456THT	Lw	37	51	59	61	61	58	54	44	67
	Lp	17	30	38	41	41	38	33	23	46

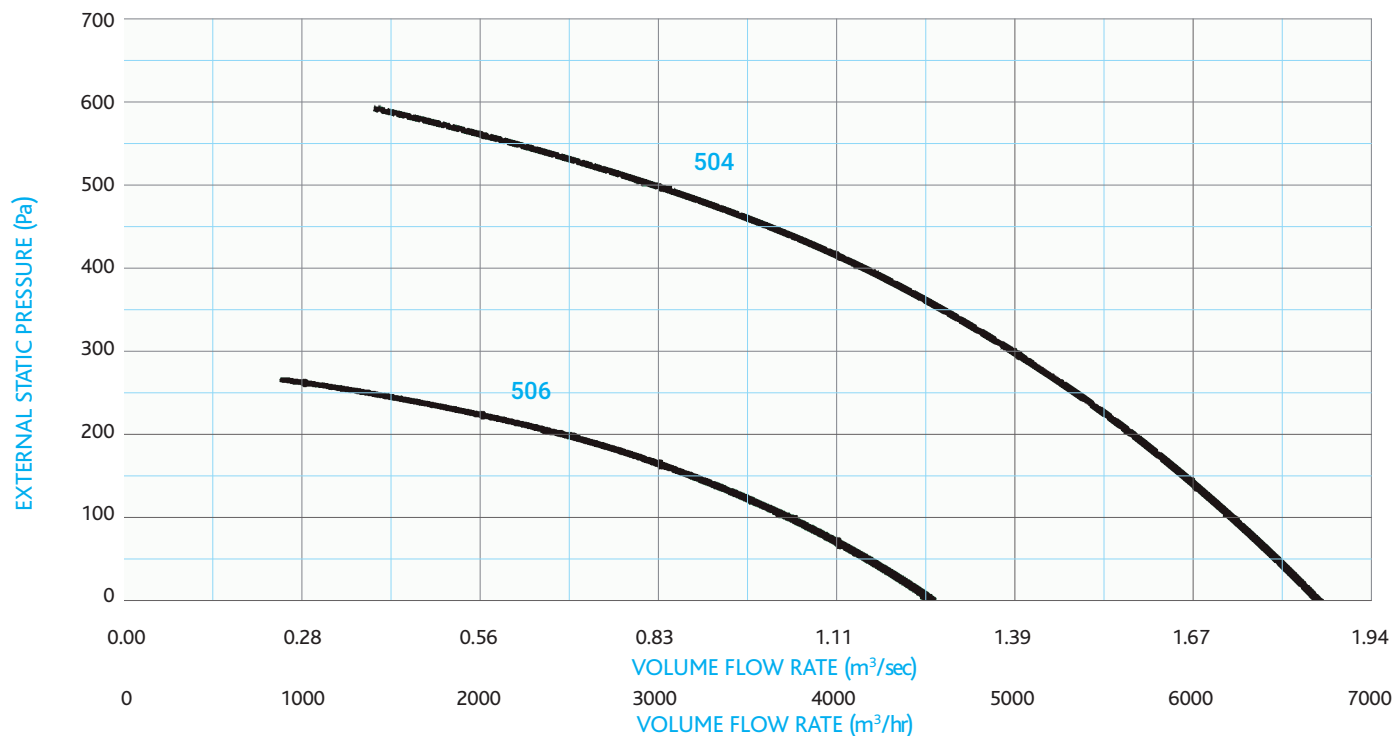
Frequency 50Hz: Air temperature 15°C: Barometric pressure 760 mm Hg: Air specific weight 1.22 Kg/m³: Lp: sound pressure level measured at 3m.

SMX-HT - Square Cased Centrifugal Box Fans High Temperature



TECHNICAL DATA - SMX504THT and SMX506THT

FAN SPEED



ELECTRICAL DATA	MODEL	PHASE	POLES	POWER (kW)	IN AMPS	IP/CL	MOT (GR)
	SMX504THT	T	4	1.10	2.50	55/F	90
	SMX506THT	T	6	0.37	1.20	55/F	80

		Mid Octave Frequency band / Hz								Total in Duct Sound Power Level
		63	125	250	500	1k	2k	4k	8k	dB(A)
SMX504THT	Lw	46	61	69	72	73	71	66	55	78
	Lp	25	41	48	52	53	50	45	38	57
SMX506THT	Lw	37	53	60	63	64	62	57	46	69
	Lp	16	32	40	43	44	41	36	26	49

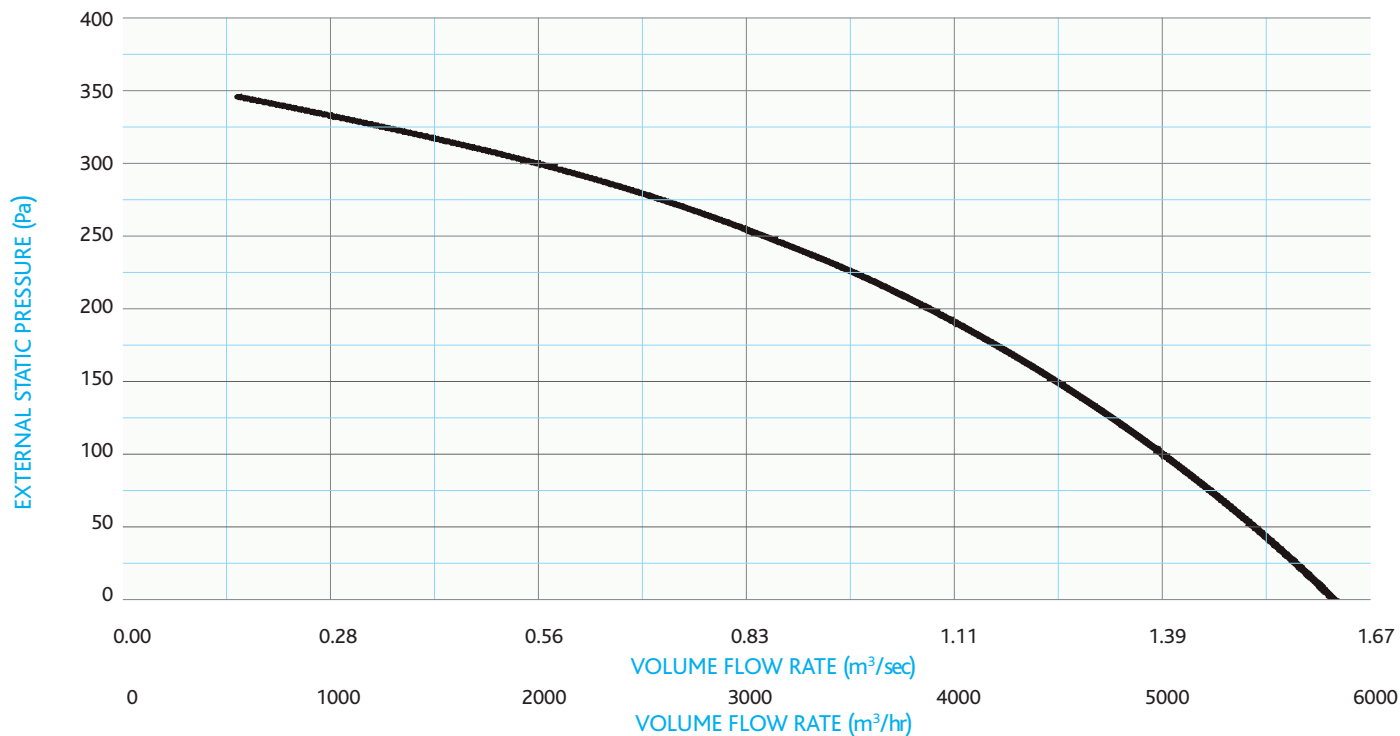
Frequency 50Hz: Air temperature 15°C: Barometric pressure 760 mm Hg: Air specific weight 1.22 Kg/m³: Lp: sound pressure level measured at 3m.

SMX-HT - Square Cased Centrifugal Box Fans High Temperature



TECHNICAL DATA - SMX566THT

FAN SPEED



ELECTRICAL DATA	MODEL	PHASE	POLES	POWER (kW)	IN AMPS	IP/CL	MOT (GR)
	SMX566THT	T	6	0.55	1.80	55/F	80

SMX566THT	Mid Octave Frequency band / Hz									Total in Duct Sound Power Level
		63	125	250	500	1k	2k	4k	8k	dB(A)
	Lw	42	52	61	64	65	63	56	46	70
Lp	22	32	41	44	45	43	36	26	50	

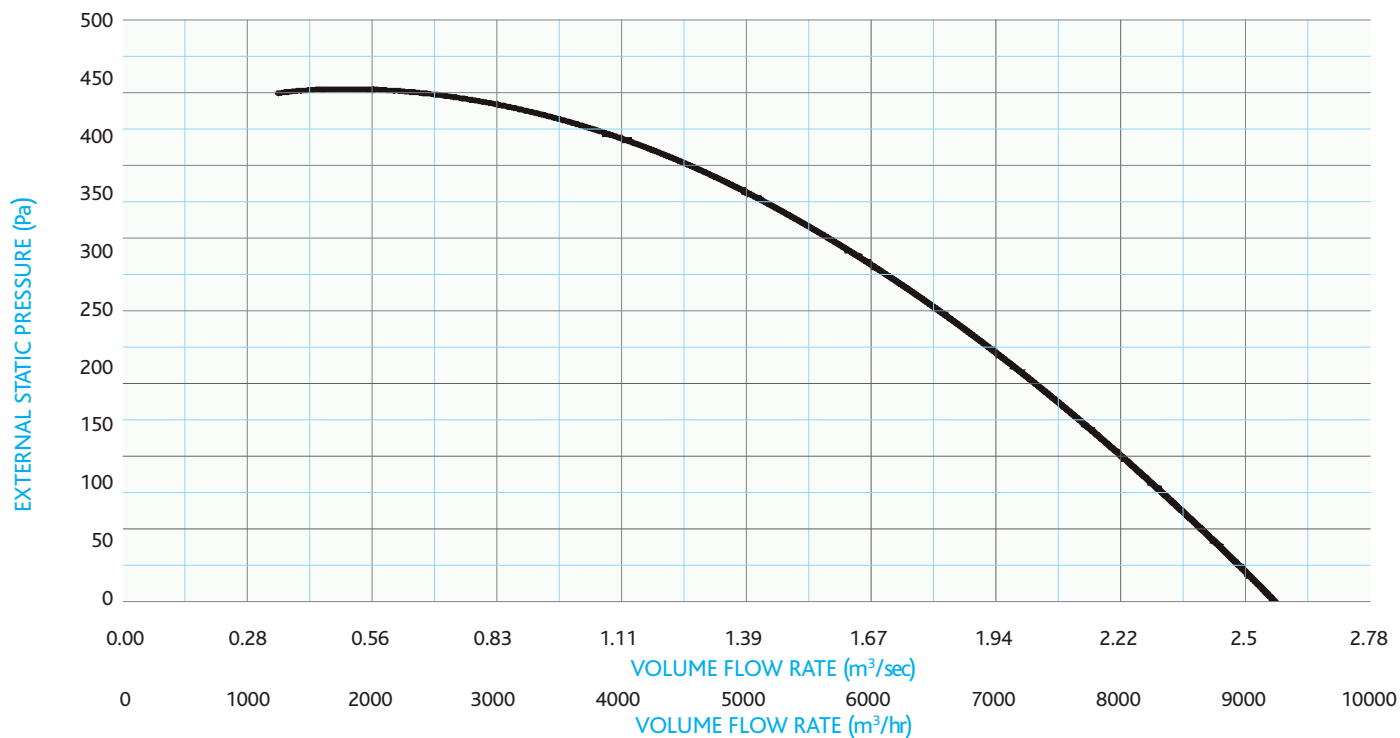
Frequency 50Hz: Air temperature 15°C: Barometric pressure 760 mm Hg: Air specific weight 1.22 Kg/m³: Lp: sound pressure level measured at 3m.

SMX-HT - Square Cased Centrifugal Box Fans High Temperature



TECHNICAL DATA - SMX636THT

FAN SPEED



ELECTRICAL DATA	MODEL	PHASE	POLES	POWER (kW)	IN AMPS	IP/CL	MOT (GR)
	SMX636THT	T	6	1.10	2.74	55/F	90

SMX636THT	Mid Octave Frequency band / Hz									Total in Duct Sound Power Level
		63	125	250	500	1k	2k	4k	8k	
	Lw	51	62	68	70	71	69	63	54	76
Lp	30	41	48	50	51	49	43	33	56	

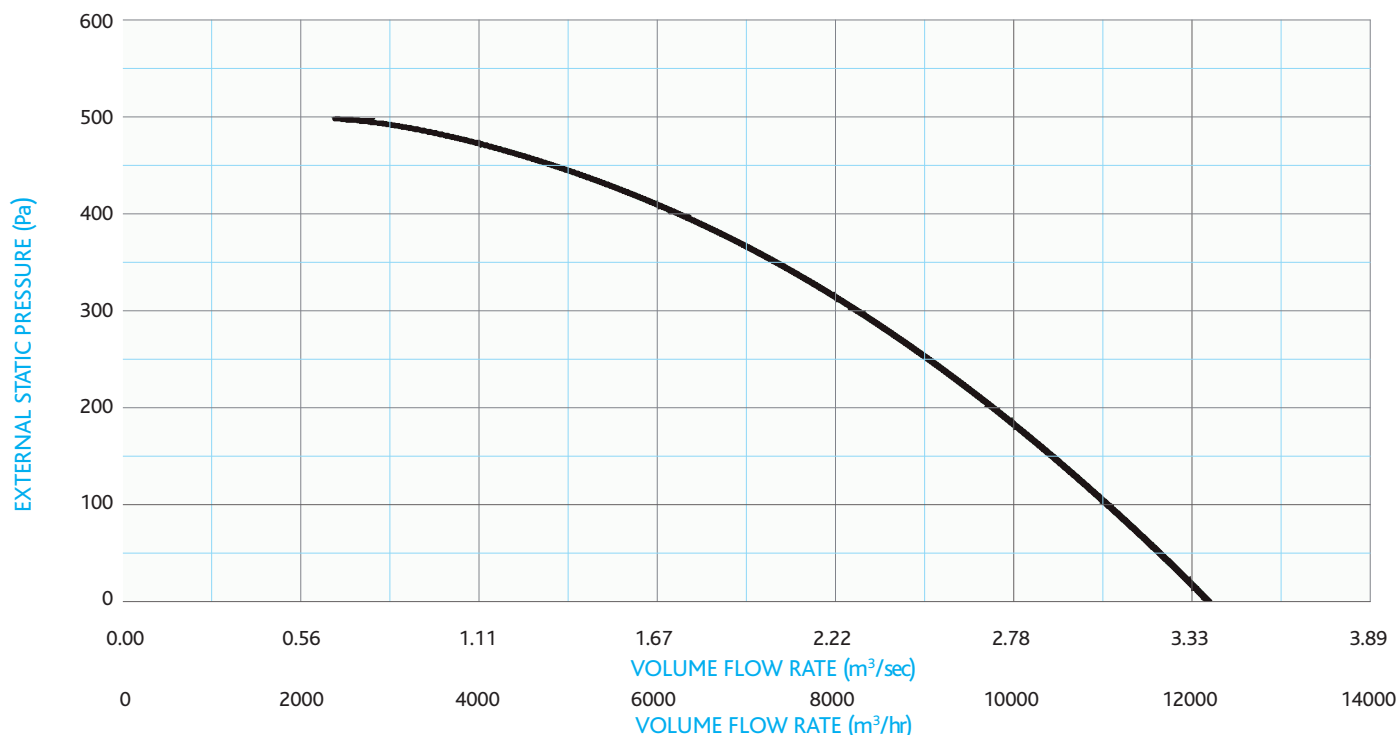
Frequency 50Hz: Air temperature 15°C: Barometric pressure 760 mm Hg: Air specific weight 1.22 Kg/m³: Lp: sound pressure level measured at 3m.

SMX-HT - Square Cased Centrifugal Box Fans High Temperature



TECHNICAL DATA - SMX716THT

FAN SPEED



ELECTRICAL DATA	MODEL	PHASE	POLES	POWER (kW)	IN AMPS	IP/CL	MOT (GR)
	SMX716THT	T	6	2.20	5.45	55/F	100

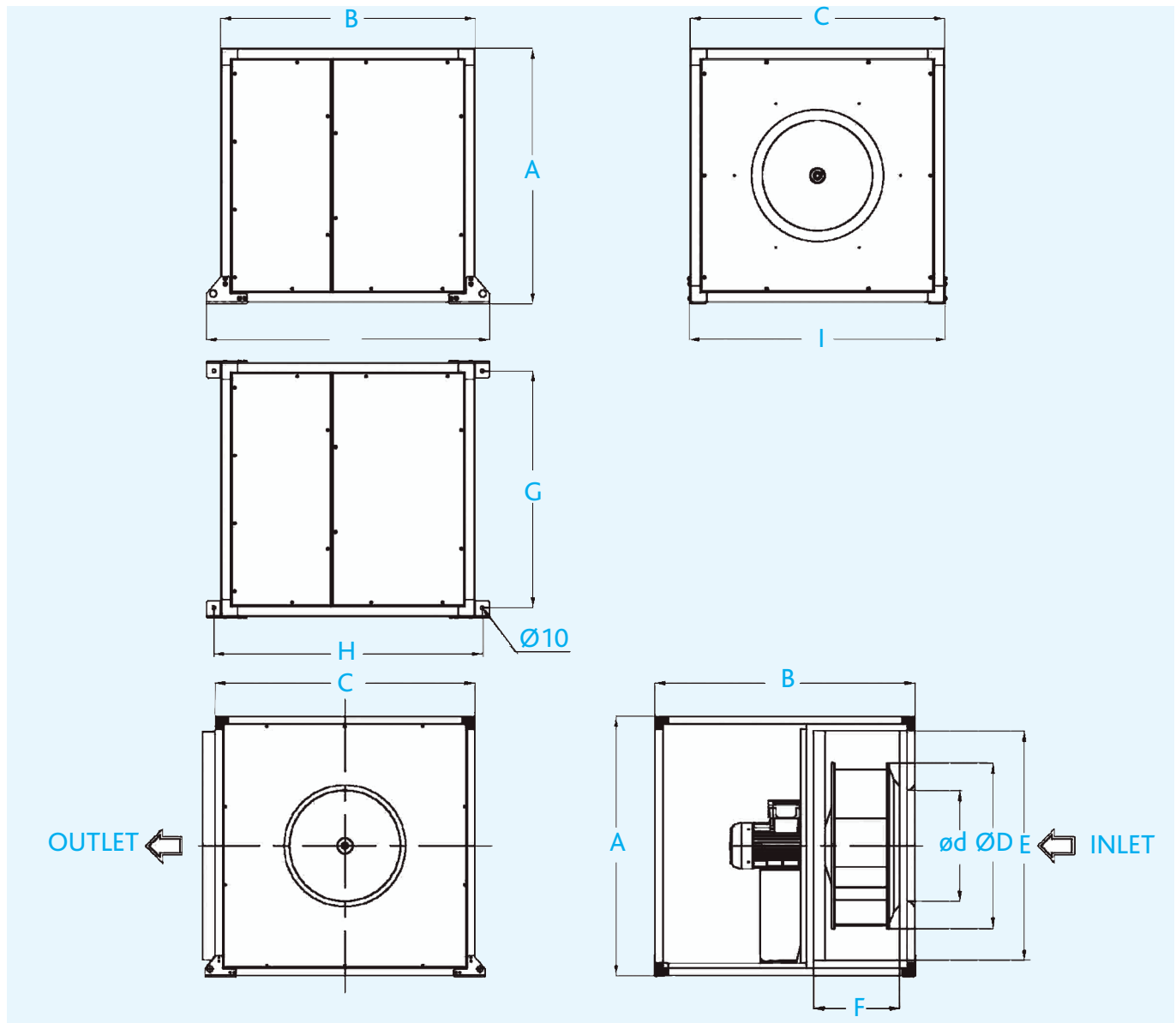
SMX716THT	Mid Octave Frequency band / Hz									Total in Duct Sound Power Level
		63	125	250	500	1k	2k	4k	8k	dB(A)
	Lw	52	65	71	74	75	73	68	60	80
Lp	32	44	51	54	55	53	48	40	60	

Frequency 50Hz: Air temperature 15°C: Barometric pressure 760 mm Hg: Air specific weight 1.22 Kg/m³: Lp: sound pressure level measured at 3m.

SMX-HT - Square Cased Centrifugal Box Fans High Temperature



DIMENSIONS (mm)

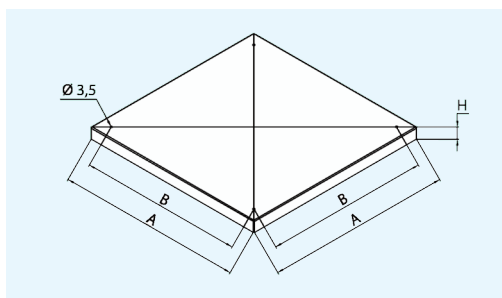


Model	A	B	C	D	d	E	F	G	H	i	L	Kg
SMX250HTs	500	500	500	260	180	420	130	468	530	506	565	28
SMX310HT	500	500	500	315	220	420	130	468	530	506	565	30
SMX354HTs	640	640	640	385	270	555	210	605	667	643	700	46
SMX404HTs	640	640	640	430	296	555	210	605	667	643	700	50
SMX450HTs	750	750	750	470	296	640	245	698	786	756	835	80
SMX500HTs	750	750	750	525	327	640	245	698	786	756	835	88
SMX566THT	750	750	750	580	370	640	245	698	786	756	835	150
SMX636THT	1000	1000	1000	650	427	880	330	948	1036	1006	1080	170
SMX716THT	1000	1000	1000	730	477	880	330	948	1036	1006	1080	175

SMX-HT - Square Cased Centrifugal Box Fans High Temperature

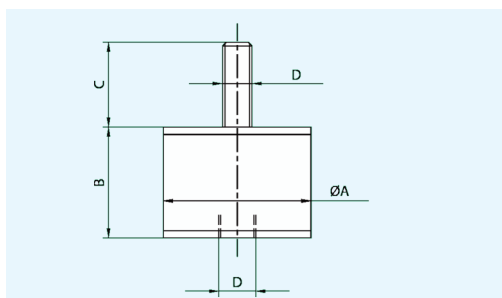


ACCESSORIES



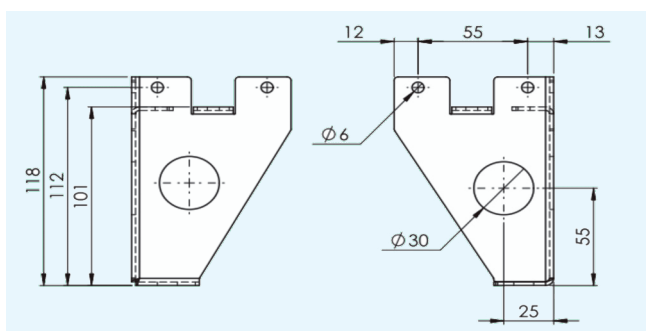
Waterproof Protection Cover

Model size	A mm	B mm	H mm	Kg
250/310	550	480	35	4.4
350/400	700	618	35	6.8
450/500/560	800	720	50	9.3
630/710	1050	970	50	15.3

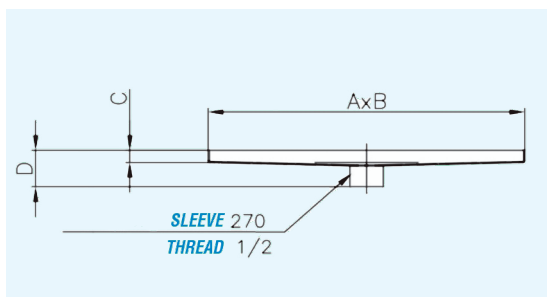


Anti-Vibration Supports

Model size	ØA mm	B mm	C mm	D
250/310/350/400	30	20	23	M8
450/500/560/630/710	40	30	28	M10



Floor Support Feet - all sizes



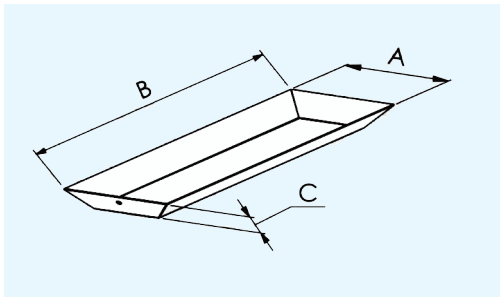
Lower Panel with Drain (for use with support feet)

Model size	A mm	B mm	C mm	D mm	Kg
250/310	170	458	10	30	1.2
350/400	251	595	10	30	1.4
450/500	294	687	18	38	2.0

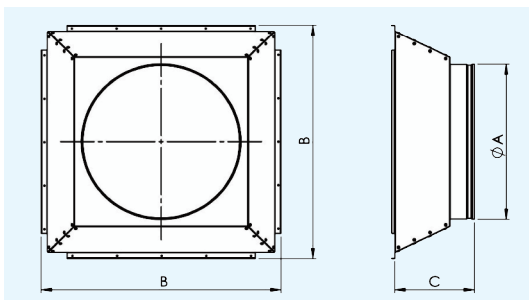
SMX-HT - Square Cased Centrifugal Box Fans High Temperature



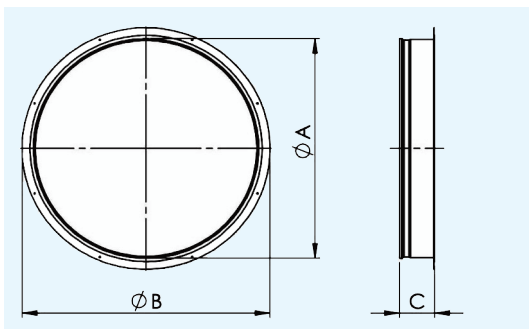
ACCESSORIES



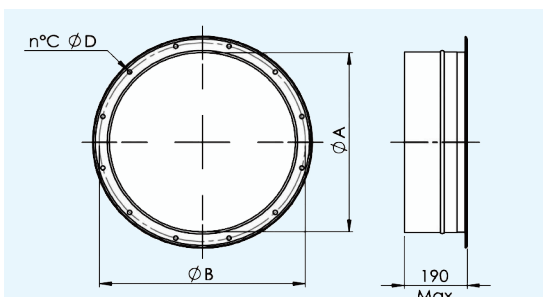
Grease Collection Tray				
Model size	A mm	B mm	C mm	Kg
250/310	112	427	22	0.8
350/400	177	567	29	1.1
450/500	200	650	36	1.3



Square to Round outlet Cone				
Model size	Ø A mm	B mm	C mm	Kg
250	250	505	150	2.65
310	315	505	155	2.86
350	350	640	155	3.83
400	400	640	155	3.77
450	450	754	250	6.32
500	500	754	250	6.41
560	560	754	250	6.52
630	630	1007	250	7.02
710	710	1007	250	7.42



Round Spigot Inlet Cone				
Model size	Ø A mm	Ø B mm	C mm	Kg
250	250	300	56.0	0.62
310	315	350	56.0	0.69
350	355	400	56.0	0.85
400	400	450	56.0	0.96
450	450	500	56.0	1.08
500	500	550	78.5	1.50
560	560	610	78.5	1.70
630	630	680	78.5	1.88
710	710	760	78.5	2.05



Flexible Connector					
Model size	Ø A mm	Ø B mm	C mm	Ø D mm	Kg
350	350	395	8	10	1.5
400	400	450	8	12	1.7
450	450	500	8	12	2.0
500	500	560	12	12	2.2
560	560	620	12	12	2.5
630	630	690	12	12	2.9
710	710	770	16	12	3.3

Commercial/Industrial Products with EC Motors

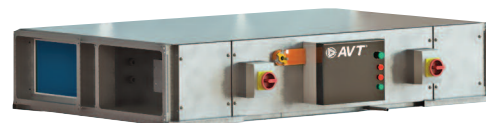
STP/STR bespoke Air Handling Units

- Bespoke or modular, supply, extract or combined
- Plantroom or weatherproof, stacked, side x side and vertical models up to 20m³/s air volume
- Adhere to specialist sector specification
- Versatile fitted control options
- Sectionalised units and flat pack available



HRPSL/HRRSL - Heat Recovery Units

- Standard designs up to 4m³/s air volume
- Plantroom or weatherproof, stacked or side x side models
- High efficiency Counterflow heat exchanger
- Versatile fitted control options



BAHU - Compact Supply Air Handling Units

AHU - Supply Air Handling Units

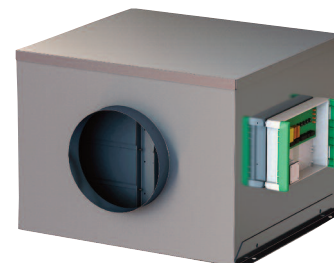
- Pre-designed units up to 1.2m³/s air volume
- Plantroom and weatherproof models
- Electric or water heating options
- Matched control panel options



DMTSQ/RMTS - Acoustic Twin Cabinet Fans

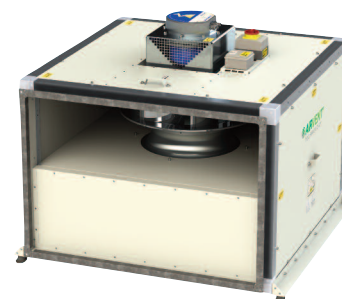
DMSQ/RMS - Acoustic Cabinet Fans

- Pre-designed units up to 2.5m³/s air volume
- Plantroom and weatherproof models
- Matched control panels. Twin fans with auto-changeover facility



QBK - High Temperature Extract Fans

- Plantroom and weatherproof models
- Up to 8m³/s air volume
- Fire rated options available
- Matched control panel options including gas interlock



HRPVX - Vertical Heat Recovery Unit

- 2 sizes - left or right configuration
- Up to 2.1m³/s air volume
- Fitted controls
- Optional internal heater (LPHW or Electric)



SMX-HT
Square Cased Centrifugal Box Fans
High Temperature
For Industrial Kitchens
Continuous running in temperatures up to 180°C
0.10 m³/sec to 3.40 m³/sec



Vectaire Ltd

Lincoln Road
Cressex Business Park
High Wycombe
Buckinghamshire
HP12 3RH

Tel: +44(0)1494 522333

Fax: +44(0)1494 522337

Email: sales@vectaire.co.uk

Web: www.vectaire.co.uk

